

Beluga Prospect
 Point of Ending: Proposed Flowline
 X= 3,349,150 (NAD27)
 Y= 667,230 (NAD27)
 Latitude: 29.601302° N (NAD 83)
 Longitude: -94.753714° W (NAD 83)

Proposed Flowline Point of Beginning
 HDD Entry at Existing Facility
 Latitude: 29.614447° N
 Longitude: -94.708809° W



Legend

----- Proposed 8" Flowline

Reference

Base map comprised of ESRI StreetMap USA data.

**Vicinity Map
 Trinity Bay Beluga Prospect**

Chambers County, Texas

Hilcorp Energy Company

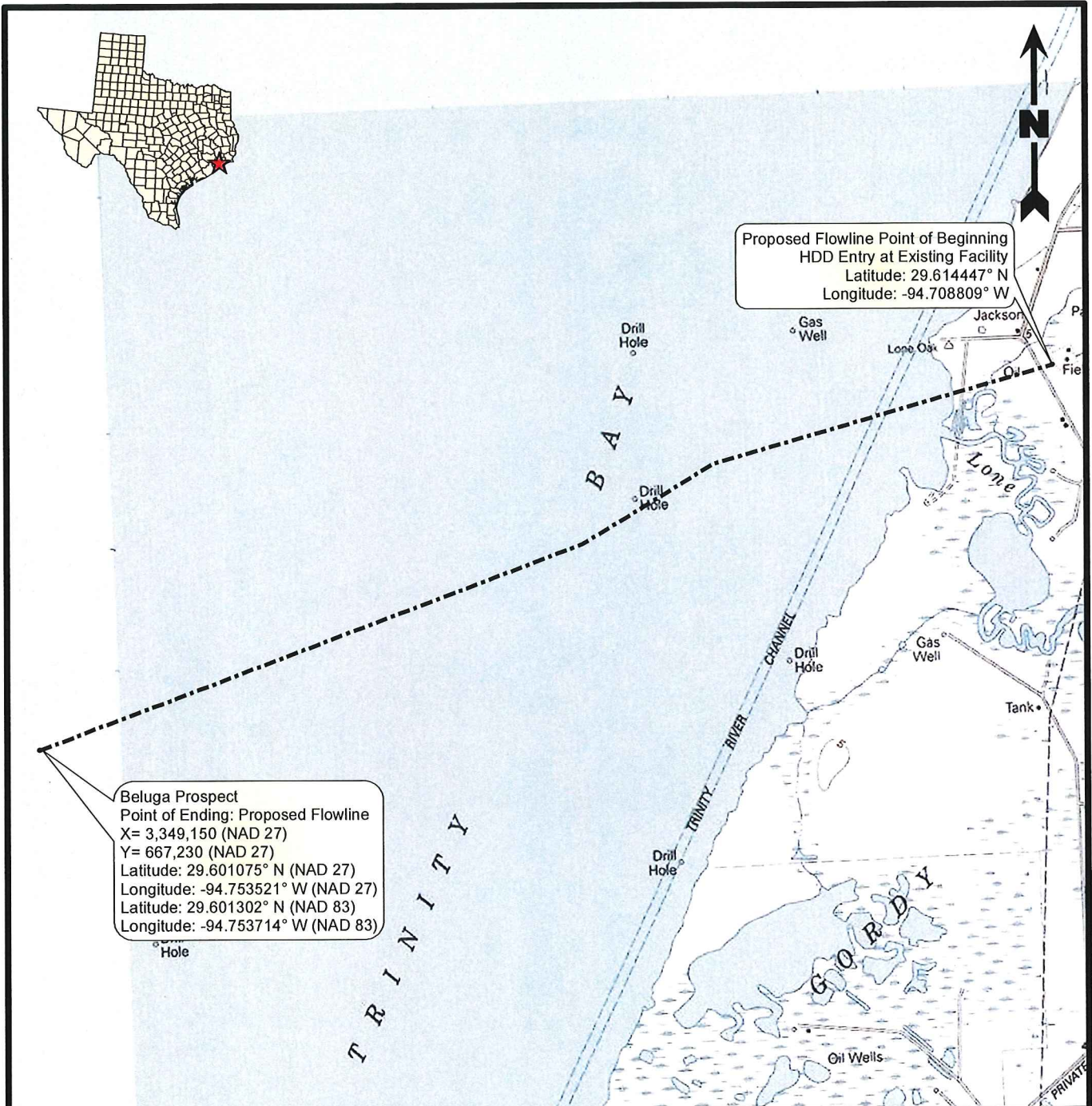


Drawn By	LMM	08/28/18
Checked By	LMH	08/28/18
Approved By	RS	08/28/18

Project Number	1140-041
Drawing Number	1140-041-A002

1
Figure

Providence Engineering and Environmental Group LLC



Proposed Flowline Point of Beginning
 HDD Entry at Existing Facility
 Latitude: 29.614447° N
 Longitude: -94.708809° W

Beluga Prospect
 Point of Ending: Proposed Flowline
 X= 3,349,150 (NAD 27)
 Y= 667,230 (NAD 27)
 Latitude: 29.601075° N (NAD 27)
 Longitude: -94.753521° W (NAD 27)
 Latitude: 29.601302° N (NAD 83)
 Longitude: -94.753714° W (NAD 83)



Legend

----- Proposed 8" Flowline

Reference

Base map comprised of United States Geological Survey 7.5-minute topographic maps, "Umbrella Point, TX", "Oak Island, TX", "Smith Point, TX", and "Lake Stephenson, TX".

**Site Location Map
 Trinity Bay Beluga Prospect**

Chambers County, Texas

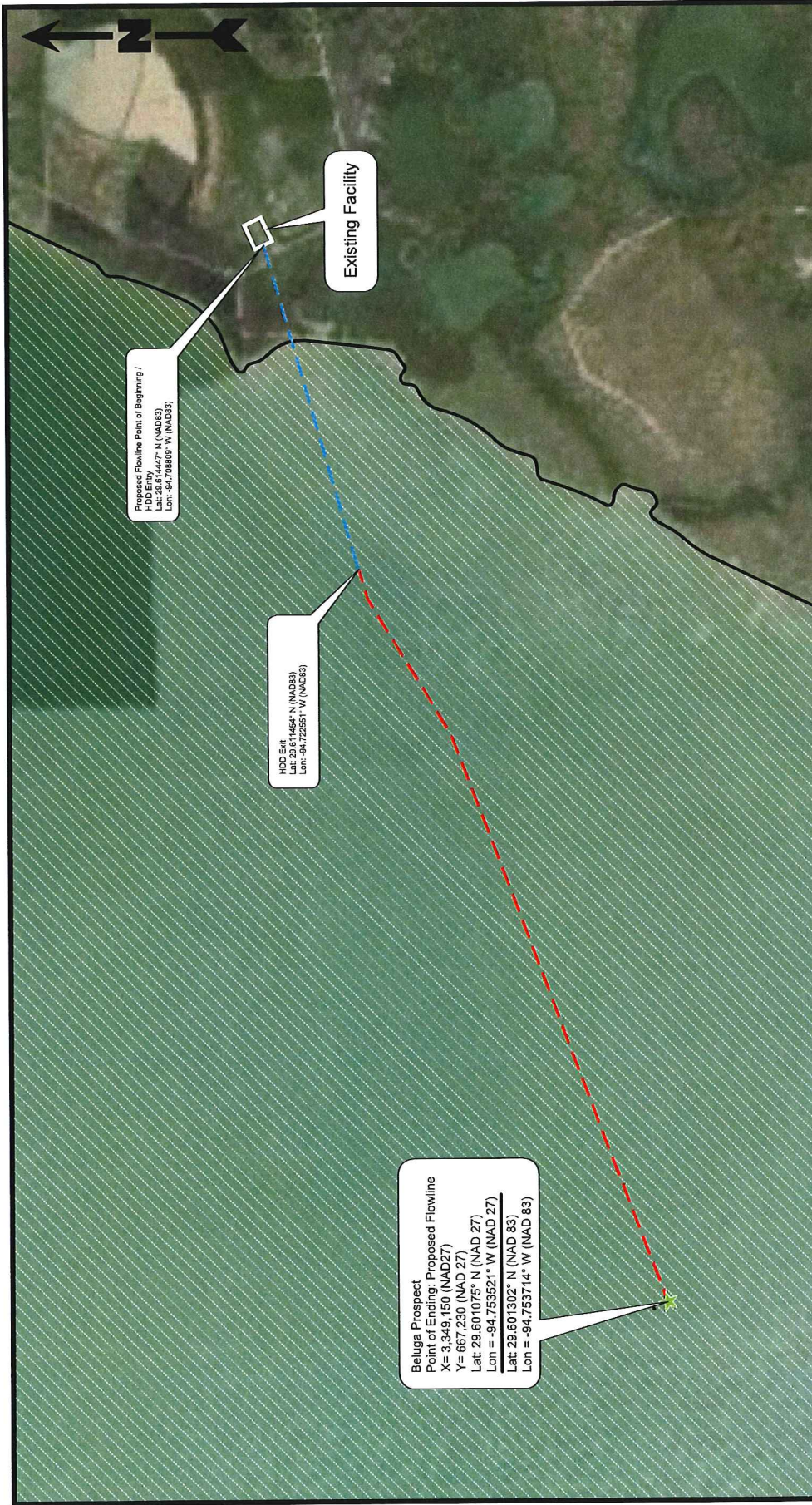
Hilcorp Energy Company



PROVIDENCE

Drawn By	LMM	08/28/18
Checked By	LMH	08/28/18
Approved By	RS	08/28/18

Project Number 1140-041	2 Figure
Drawing Number 1140-041-A003	




Site Plan

Trinity Bay Beluga Prospect

Chambers County, Texas

Hilcorp Energy Company




Drawn By	WDS	10/02/18	
Checked By	TDJ	10/02/18	
Approved By	RS	10/02/18	
Project Number		1140-041	
Drawing Number		1140-041-A004	

3

Figure

Legend

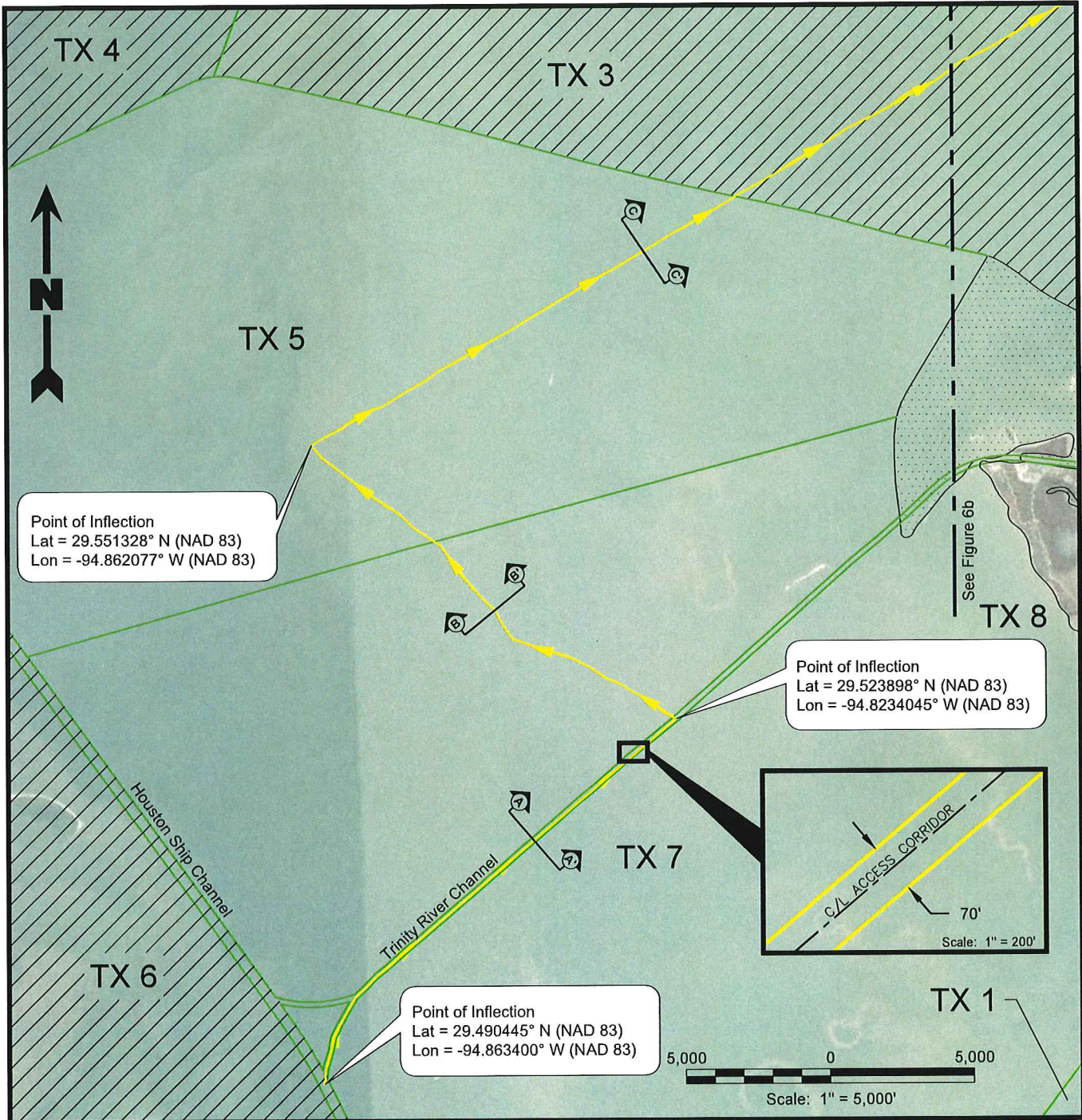
- Shellfish Harvesting Area
- Proposed 8" Flowline To Be Bored (4,500 Linear Feet)
- Proposed 8" Flowline To Be Jetted (10,604 Linear Feet)



Scale: 1" = 1,500'

Reference

Base map comprised of Bing Maps aerial imagery from (c) 2018 Microsoft Corporation and its data suppliers, exported 08/28/18.



Legend

	Access Corridor (70')	TX 5	Shellfish Harvesting Area Labels
	Shellfish Harvesting Area		Restricted Shellfish Harvesting Area

- Notes**
1. Quantities calculated using survey conducted on 05/30-31/18 and 06/14/18.
 2. Mean high water = +1.1' and mean low water = +0.1'
 3. Equipment will draft no greater than 6.5'
 4. Minimum water depth of 8.5' at high tide.

Reference

Base map comprised of Bing Maps aerial imagery from (c) 2018 Microsoft Corporation and its data suppliers.

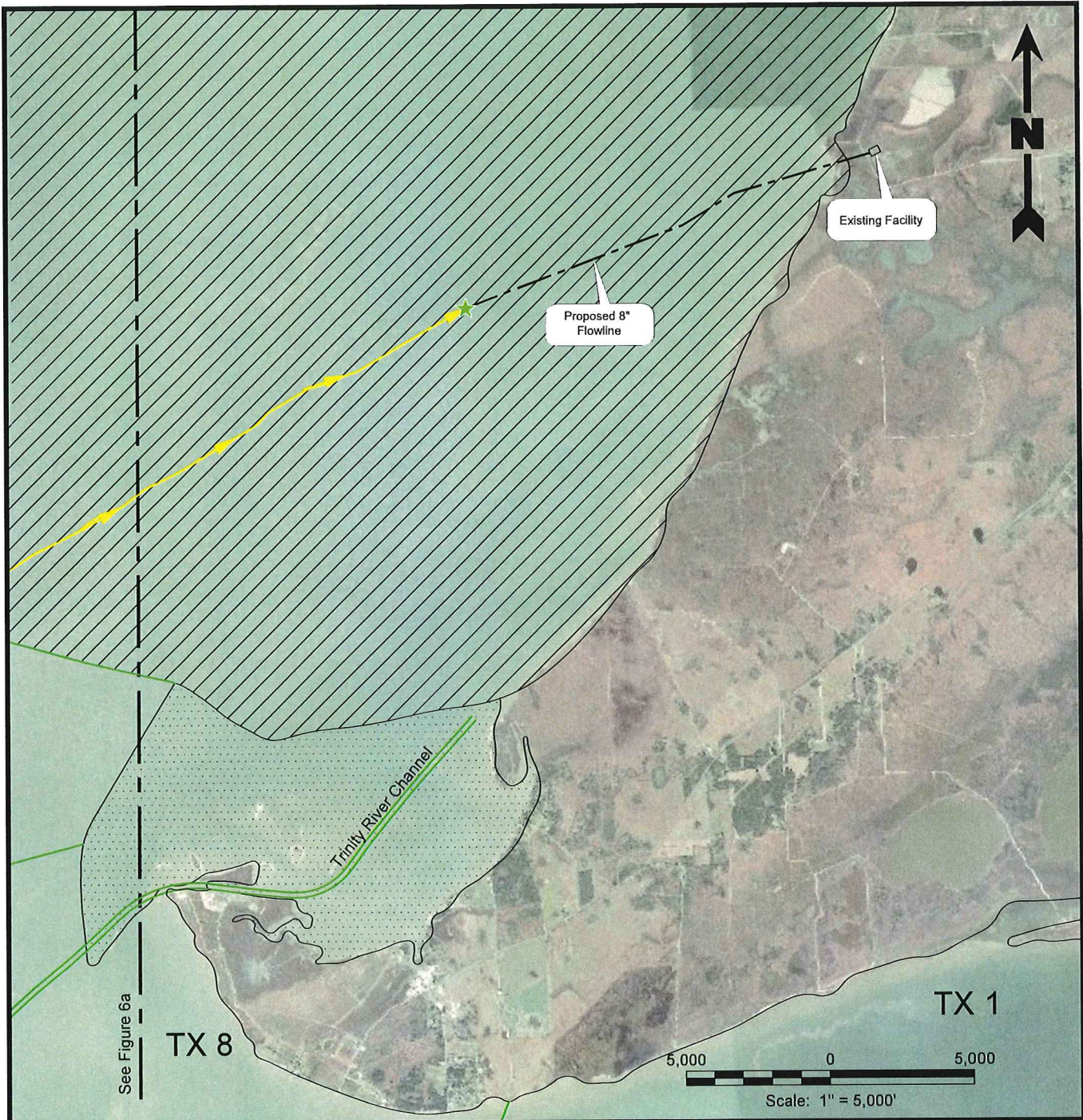
Access Map
Trinity Bay Beluga Prospect

Chambers County, Texas

Hilcorp Energy Company

	Drawn By	WDS	10/02/18
	Checked By	TDJ	10/02/18
	Approved By	RS	10/02/18
Project Number		1140-041	
Drawing Number		1140-041-A007	
			4a
			Figure

Providence Engineering and Environmental Group LLC



Legend

- Access Corridor (70')
- Shellfish Harvesting Area
- TX 5** Shellfish Harvesting Area Labels
- Restricted Shellfish Harvesting Area

Notes

1. Quantities calculated using survey conducted on 05/30-31/18 and 06/14/18.
2. Mean high water = +1.1' and mean low water = +0.1'
3. Equipment will draft no greater than 6.5'
4. Minimum water depth of 8.5' at high tide.

Reference

Base map comprised of Bing Maps aerial imagery from (c) 2018 Microsoft Corporation and its data suppliers.

**Access Map
 Trinity Bay Beluga Prospect**

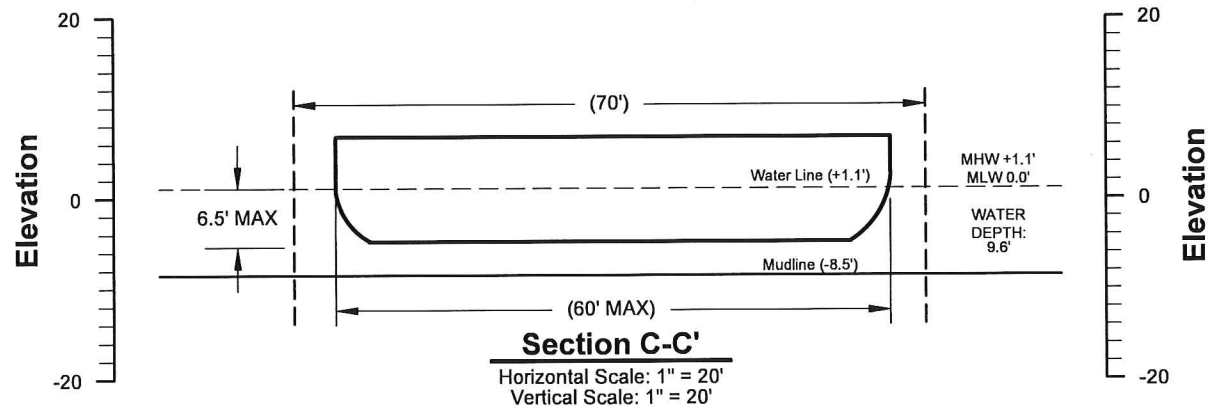
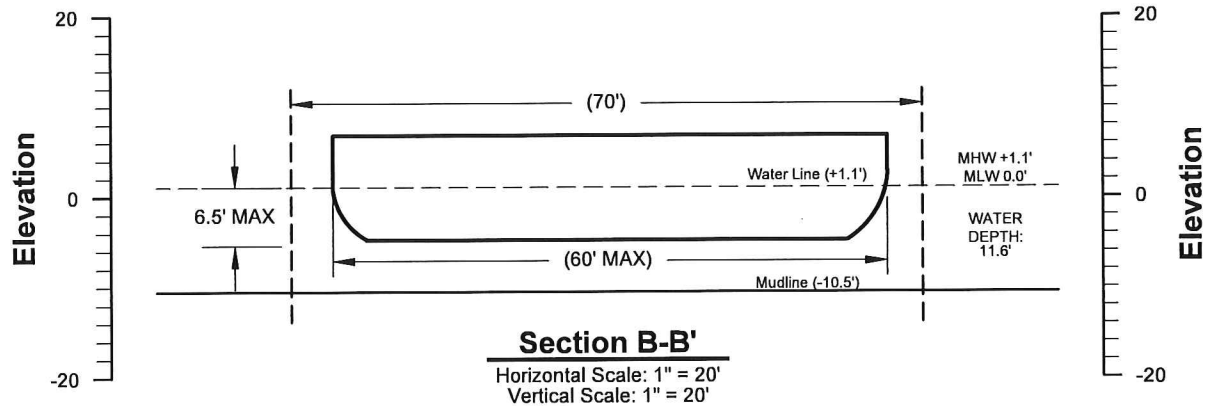
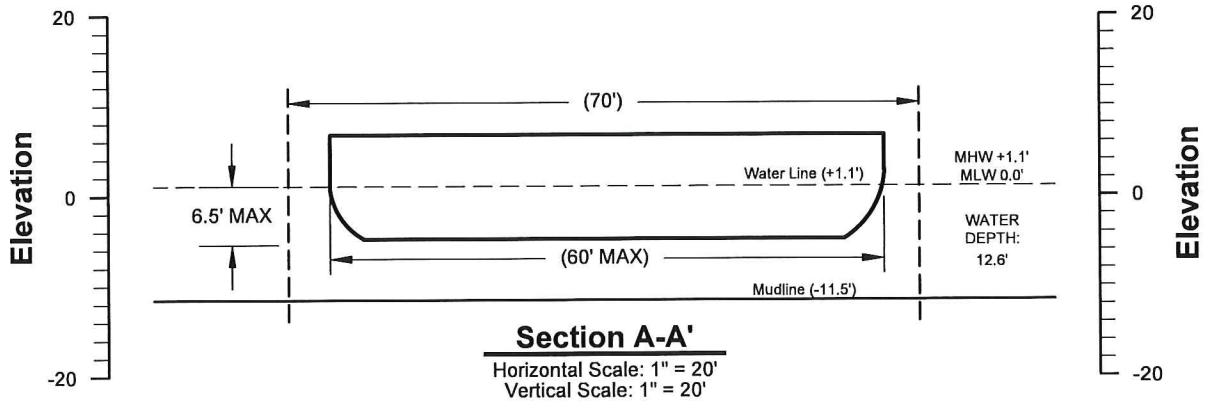
Chambers County, Texas

Hilcorp Energy Company



Drawn By	WDS	10/02/18	
Checked By	TDJ	10/02/18	
Approved By	RS	10/02/18	
Project Number		1140-041	
Drawing Number		1140-041-A008	
			4b Figure

Providence Engineering and Environmental Group LLC



Note

1. Quantities calculated using survey conducted on 05/30-31/18 and 06/14/18.
2. Mean high water = +1.1' and mean low water = +0.1'
3. Equipment will draft no greater than 6.5'
4. Minimum water depth of 8.5' at high tide.

Reference

Details comprised from client provided figure.

**Access Details
 Trinity Bay Beluga Prospect**

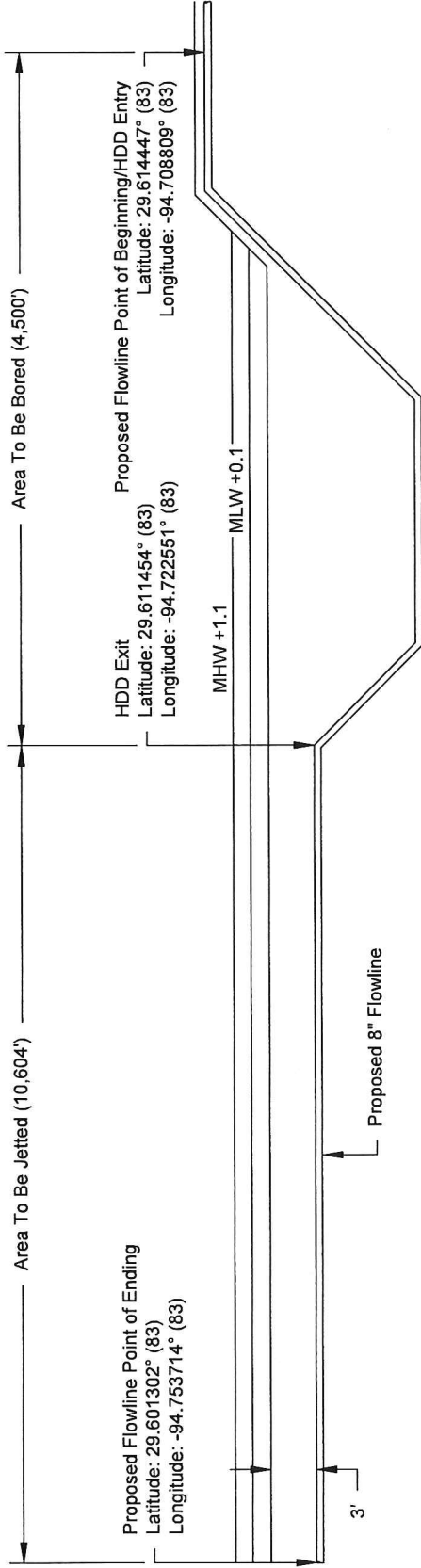
Chambers County, Texas

Hilcorp Energy Company



Drawn By	WDS	10/09/18
Checked By	OB	10/09/18
Approved By	RS	10/09/18

Project Number	1140-041	4c Figure
Drawing Number	1140-041-A012	



Flowline Profile
Not to Scale

Flowline Profile
Trinity Bay Beluga Prospect

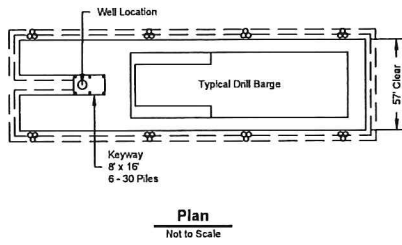
Chambers County, Texas

Hilcorp Energy Company

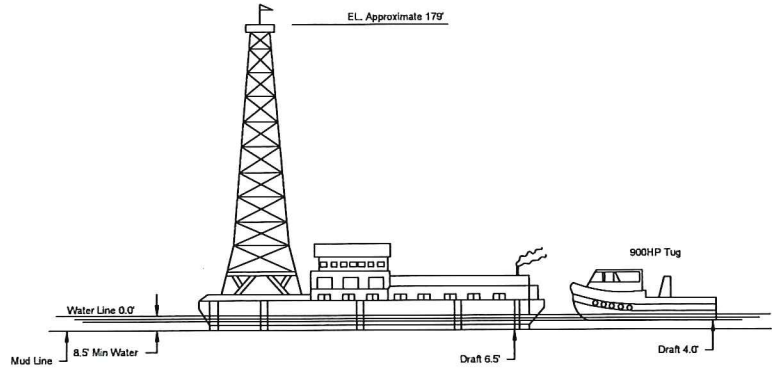
Drawn By	WDS	10/02/18
Checked By	TDJ	10/02/18
Approved By	RS	10/02/18
Project Number		5
1140-041		
Drawing Number		Figure
1140-041-A009		



Typical Diesel Powered Drill Barge



Plan
 Not to Scale

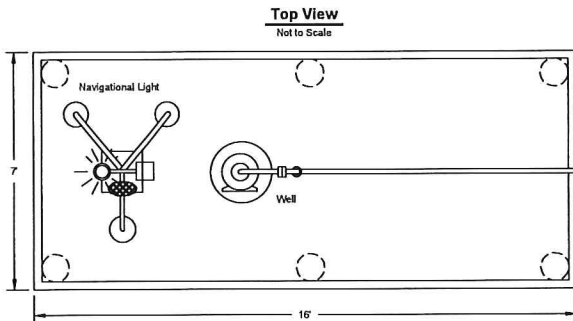


Elevation
 Not to Scale

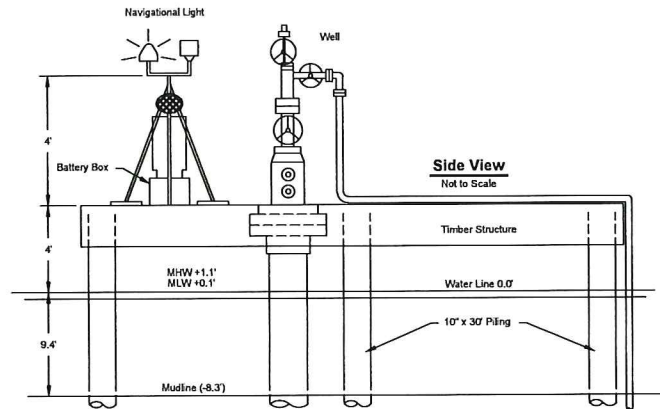
Note

- 8 temporary 3 pile cluster to be driven to assist in removing drill barge from location. Temporary clusters to be pulled when permanent well guard is installed.

Typical Well Head Protector



Top View
 Not to Scale



Side View
 Not to Scale

Reference

Details comprised from client provided figure.

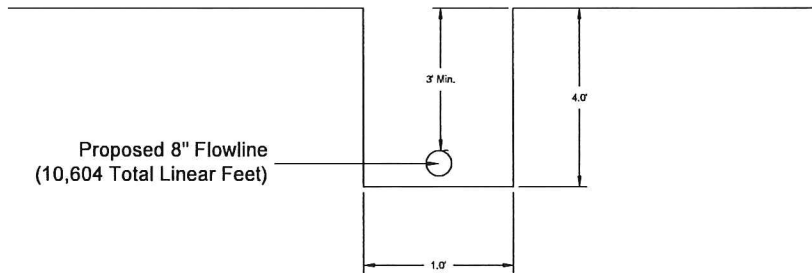
**Well Details
 Trinity Bay Beluga Prospect**

Chambers County, Texas

Hilcorp Energy Company



Drawn By	WDS	10/02/18
Checked By	TDJ	10/02/18
Approved By	RS	10/02/18
Project Number 1140-041		6 Figure
Drawing Number 1140-041-A010		



Typical Jetting Ditch
 Not to Scale

Notes

1. Approximately 1,571 cu.yds. of material to be displaced by jetting operations.
2. Ditch is to be backfilled by naturally occurring sedimentation.

**Flowline Installation Details
 Trinity Bay Beluga Prospect**

Chambers County, Texas

Hilcorp Energy Company



Drawn By	WDS	10/02/18
Checked By	TDJ	10/02/18
Approved By	RS	10/02/18

Project Number	7 Figure
1140-041	
Drawing Number	
1140-041-A011	

Reference

Details comprised from client provided figure.

Providence Engineering and Environmental Group, LLC